

OFT – Simulation Software for Hydraulics, Pneumatics, Electricals and Logic.

The Software package with integrated Teachware for basic and further training.

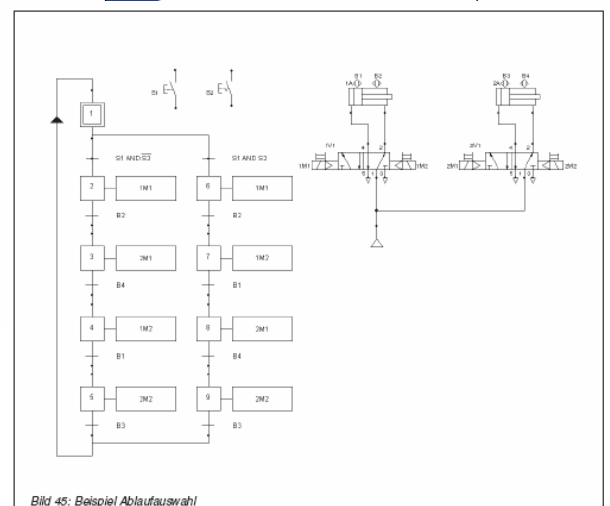
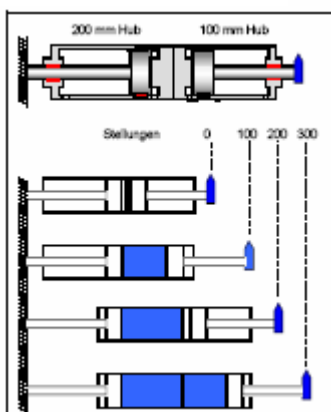
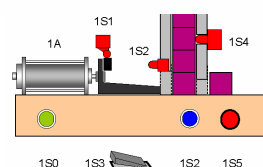
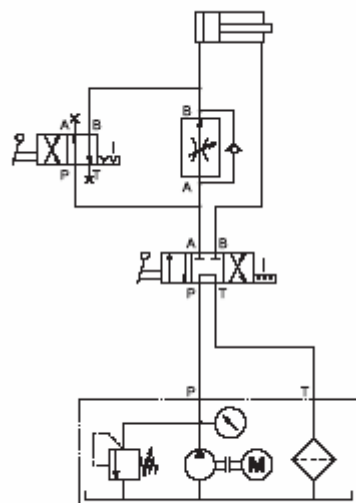
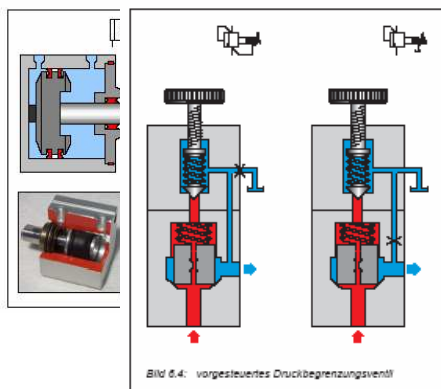
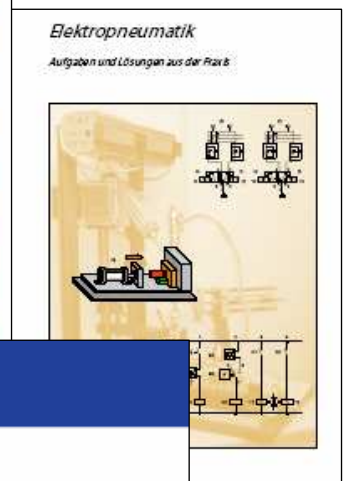
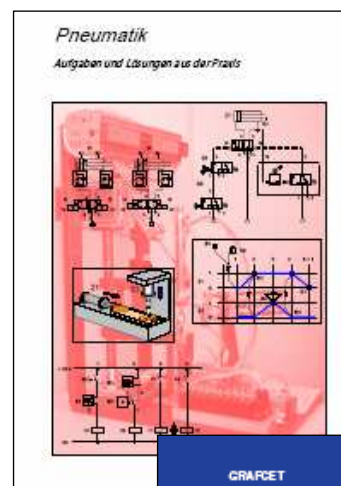
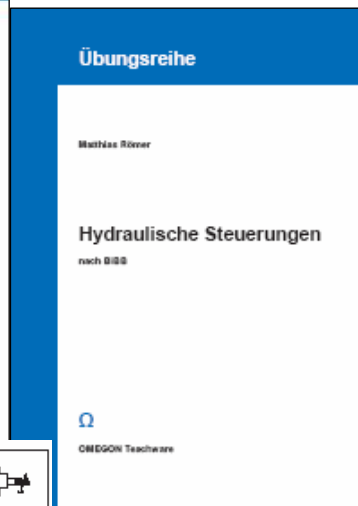
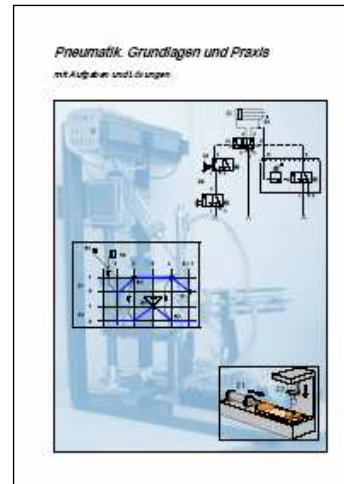
The image displays several screenshots of the Omega Fluid Technology software interface, illustrating its capabilities in simulation and teaching.

- Top Screenshot:** Shows the main workspace with a hydraulic circuit diagram. The circuit includes three solenoid valves (1V1, 2V1, 3V1) and a three-phase motor. A library on the left lists components like cylinders, valves, and electrical components.
- Middle Screenshot:** Shows the 'Didactic' menu, which includes options like 'Dictionary...', 'OFT-Training Manual', 'Technical Drawings', 'Fluidtechnology', 'Pneumatics', 'Hydraulics', 'Mechatronic Systems and Functions', 'Grafcet', 'Practical Examples', and 'Films..'. Below the menu is a detailed view of a hydraulic valve symbol.
- Bottom Screenshot:** Shows a 'Eigenschaftseditor' (Property Editor) window for a cylinder component. It displays a 3D cutaway view of the cylinder with ports labeled 1 (P), 2 (A), and X1 (R). The window also has tabs for 'Eigenschaften', 'Nutzerdaten', 'Foto', and 'Schritt'.

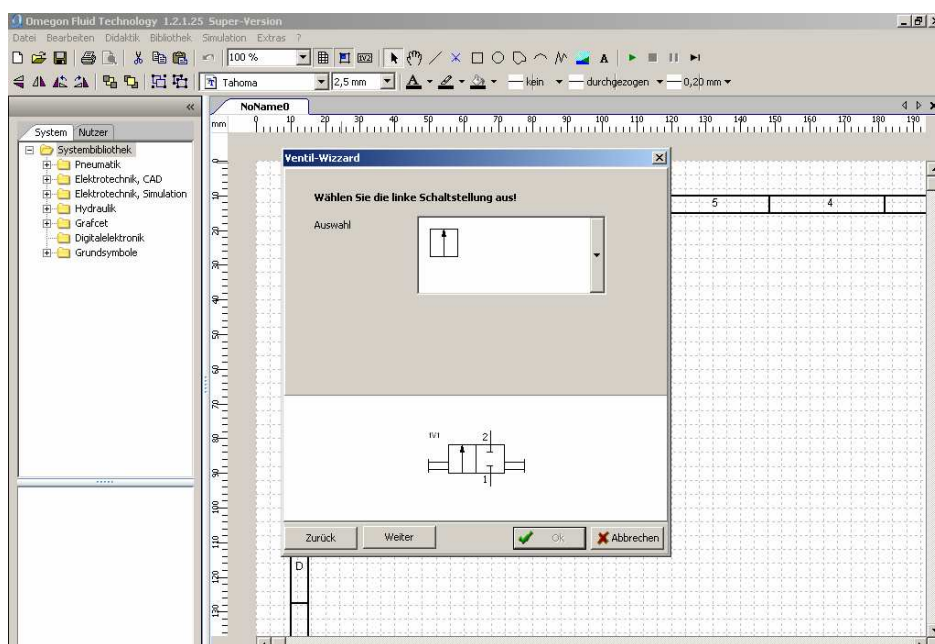
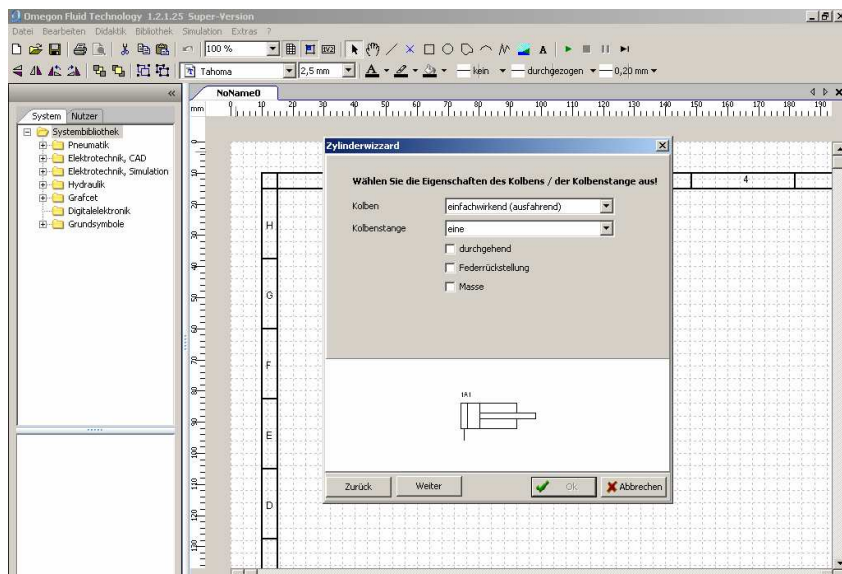
This software also includes fundamentals of each subject plus exercises and solutions to form an excellent introduction. The test exercises incorporate numerous circuit diagrams. Also included are technical books on the subject. Some of these have already been translated into English (marked blue).

- [Technical Drawings - Fundamentals](#)
- [Graphic Symbols DIN ISO 1219](#)
- Introduction - Fluid Technology
- Pneumatics. Basics and Application
- Pneumatics - Exercises and Solutions
- Electropneumatics - Exercises and Solutions
- Pneumatic Control - Exercises and Solutions
- Electropneumatic Control - Exercises and Solutions
- Hydraulic Control - Exercises and Solutions
- [Mechatronic Systems and Functions](#)
- Introduction - Grafcet - Exercises and Solutions
- [Electric Drives](#)
- [Fundamentals of Electro-technics](#)
- PLC

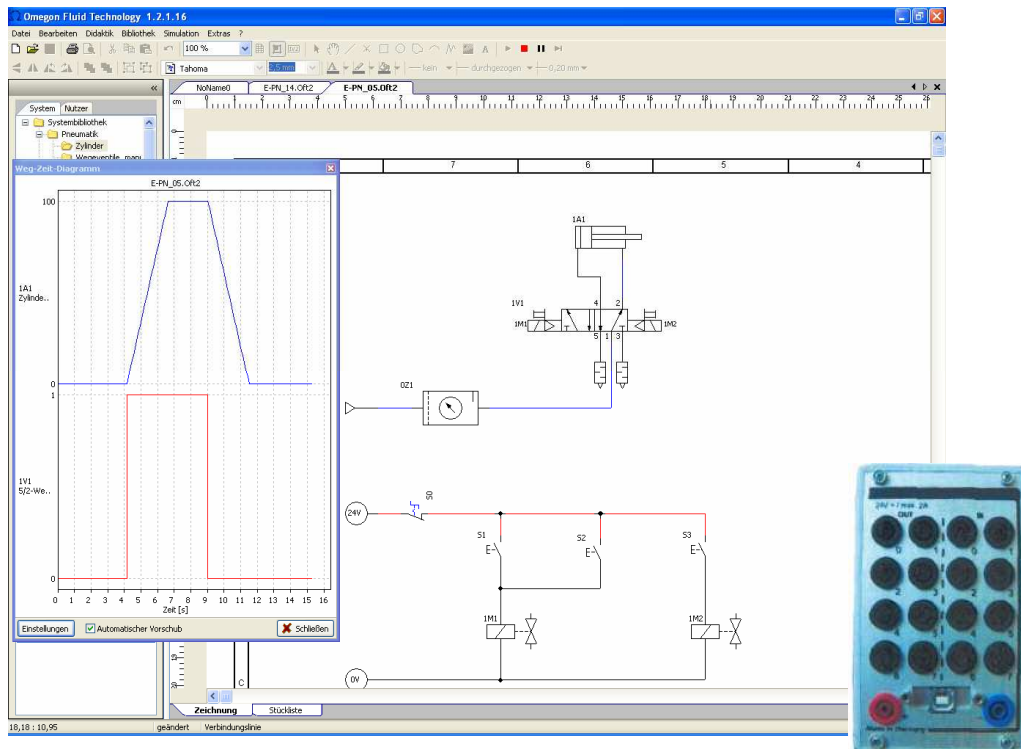
- Dictionary – English - German



Cylinder – Valve Wizard



- Phase diagrams



USB-IO Box

Principal features of the Software

- Circuit diagrams using hydraulic, pneumatic, electrical and logic symbols may be created quickly and without problems. They may be printed in different formats and can include extras such as company logos and other required layouts.
- The OFT-Software is easy to use and does not normally require any operator training.
- Symbols are found in the software libraries with the facility that the user may add new symbols. These may be stored in an individual user library.
- An additional library for automotive symbols is also included.
- A parts list of deposited unit symbols is automatically generated.
- Double clicking a symbol will open a menu showing properties and uses of the component as well as a sectional drawing and a photo.
- A single place student's licence is available with conditions, but would contain all the modules essential to basic training.